

# Rapp-Zapp

Jens Plocki  
2012

1 *mf*

R L R R L R L R

Measures 1-3: Musical notation for the first three measures. Measure 1 has a dynamic marking *mf*. Above the staff, the letters 'R L' are positioned over the first two notes, 'R' over the third, 'R L' over the fourth and fifth, and 'L R' over the sixth and seventh.

4

Measure 4: Musical notation for the fourth measure.

7

Measures 5-6: Musical notation for the fifth and sixth measures.

10

Measures 7-9: Musical notation for the seventh, eighth, and ninth measures. Measure 7 has a '0' above the first note and a '+' above the second. Measure 9 has the letters 'R L L R L L R L R' above the staff.

13

Measures 10-12: Musical notation for the tenth, eleventh, and twelfth measures. Measure 10 has an 'L' above the first note. Measure 11 has an 'L' above the first note. Measure 12 has 'L L L' above the last three notes. Below the staff, the letters 'R R...' are written under the first two notes.

15

Measures 13-14: Musical notation for the thirteenth and fourteenth measures. Measure 13 has 'R L R' above the first three notes.

17

Measures 15-16: Musical notation for the fifteenth and sixteenth measures.

19

Measures 17-18: Musical notation for the seventeenth and eighteenth measures.

21

Measures 19-20: Musical notation for the nineteenth and twentieth measures.

23

25 *fp* *mf*

27 RLLRLRL

30

33

36

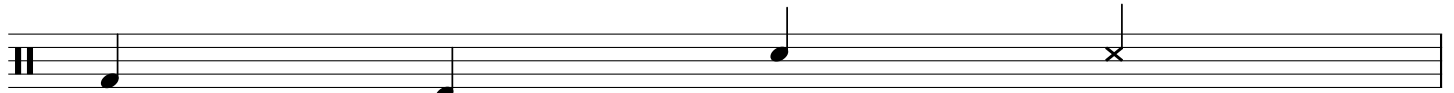
39

42

45 0 +

48

# Legende

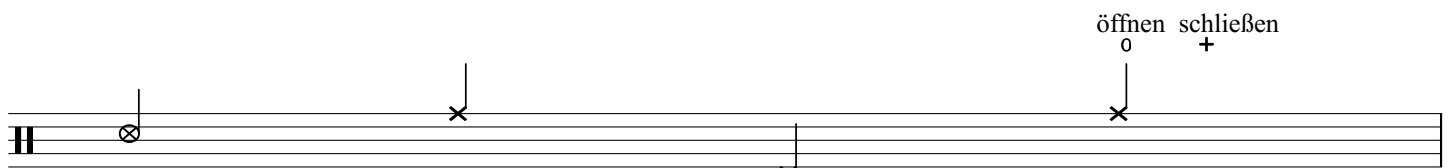


Bass  
Drum  
rechts

Bass  
Drum  
links

Snare

Snare  
RimClick

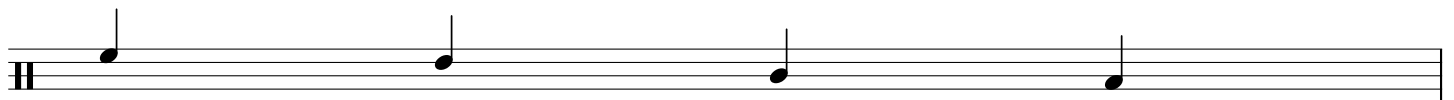


Snare  
RimShot

HiHat  
geschlossen

HiHat  
Pedal

HiHat

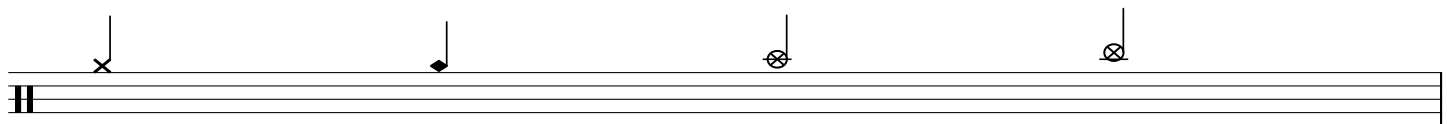


hohes  
Tom

mittleres  
Tom

tiefes  
Tom

StandTom

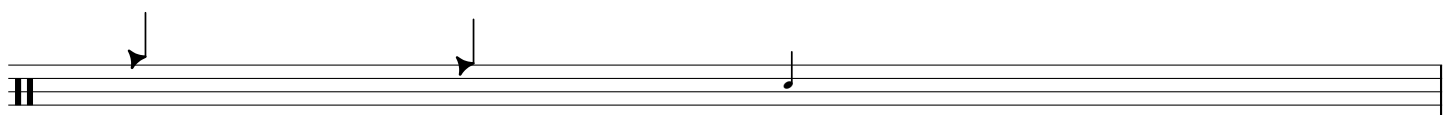


Ride

Ride  
Glocke

Crash1

Crash2



hohe  
KuhGlock

tiefe  
Kuhglock

GhostNote  
(leise)